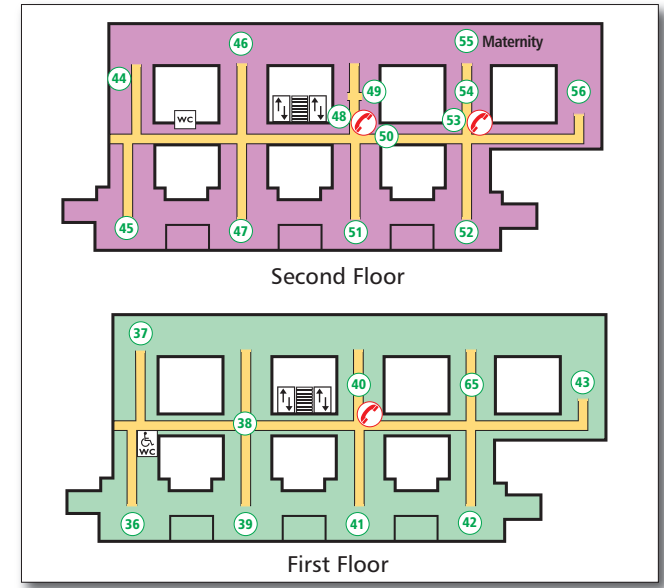
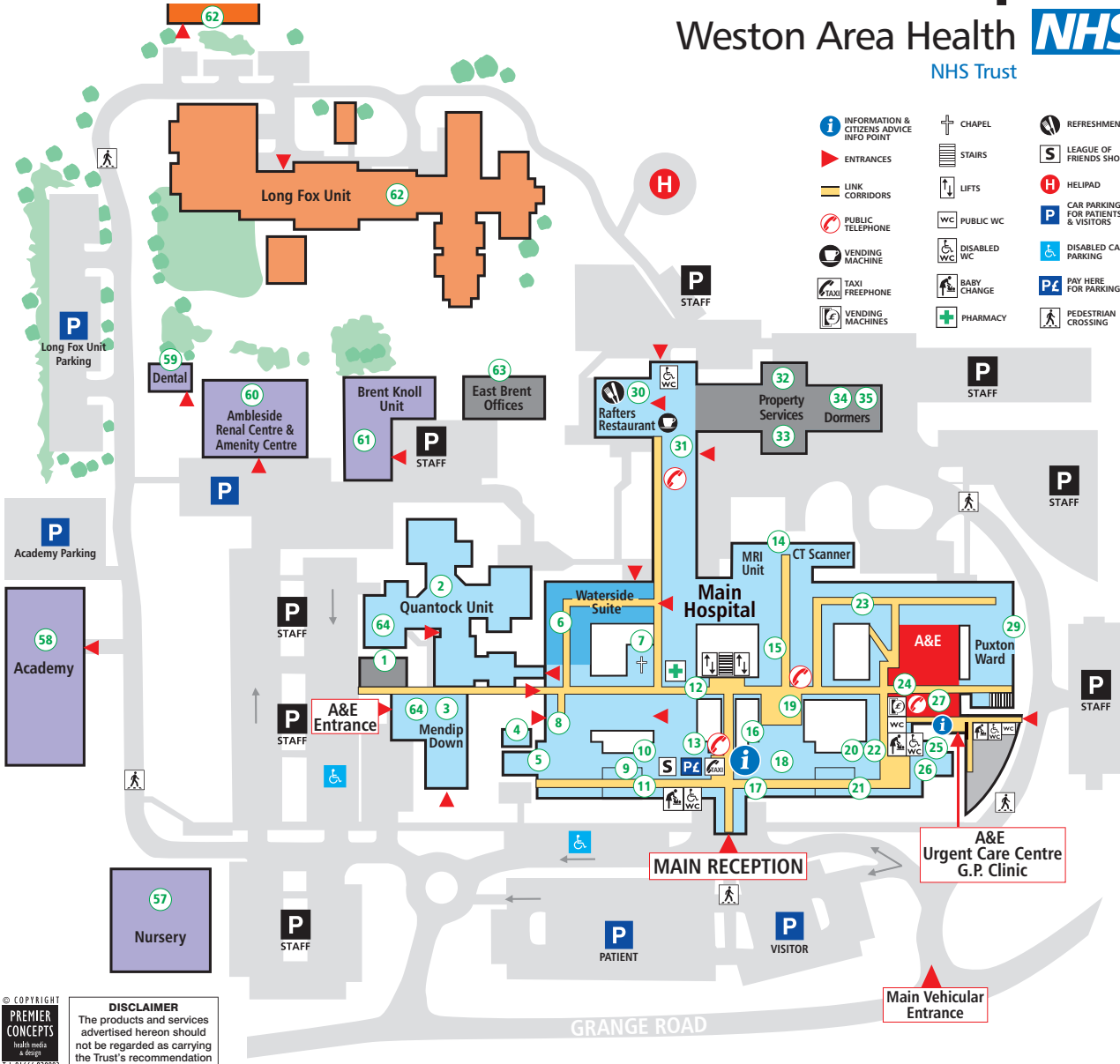


Welcome to Weston General Hospital

Weston Area Health **NHS**
NHS Trust



Department	Floor	Ref No.	Department	Floor	Ref No.
Academy		58	Juniper Ward		62
Accident & Emergency	G	27	Rowan Rehab Unit		62
Ambleside & Amenity Centre		60	Rowan Ward		62
Antenatal Clinic	2	50	Southernwood		62
Appointments	G	18	Maternity	2	55
Ashcombe Ward / Maternity Unit	2	54	Mendip Down	G	3
Audiology (Hearing Aids)	G	26	MRI Unit and CT Scanner	G	14
Berrow Ward	1	39	Nursery	G	57
Brean Down Unit	2	44	Outpatients	G	21
Brent Knoll Offices		61	Occupational Health	G	32
Chapel	G	7	Occupational Therapy	G	9
Cheddar Ward / PCU	2	52	Orthopaedic Clinic	G	23
Churchill Day Unit	G	5	Paediatric Assessment Unit	1	65
Day Case Unit	2	56	PALS	G	17
Dental	G	59	Pathology	1	40
Dietetics	G	11	Pharmacy	G	12
Discharge Lounge	G	64	Physiotherapy	G	9
Dormers	G	34	Podiatry	G	8
Draycott Ward	1	37	Pre-Operations Assessment	G	22
East Brent Offices		63	Print Room	1	38
ECG	G	20	Property Services	G	33
Endoscopy Suite	2	53	Puxton Ward	G	29
Enquiries	G	16	Quantock Unit	G	2
Eye Clinic	G	25	Rafters Restaurant	G	30
Fracture Clinic	G	23	Seashore Unit	1	65
General Office	G	19	Shop - League of Friends	G	13
GP Clinic	G	24	Speech Therapy	G	10
Gynaecology Out Patients	2	49	Stores	G	31
Harpree East	1	42	Steephholm Ward	2	47
Harpree West	1	41	Theatres	2	46
Hutton Ward	2	51	Uphill Ward	2	45
Intensive Therapy Unit	2	48	Urgent Care Centre	G	27
Kewstoke Ward	1	36	Voluntary Services	G	35
Long Fox Unit		62	Waterside Suite	G	6
Cove Ward		62	Weston Oncology & Haematology	1	43
Dune Ward		62	X-Ray / CCU (Cardiac Care Unit)	G	15

DISCLAIMER
The products and services advertised hereon should not be regarded as carrying the Trust's recommendation